

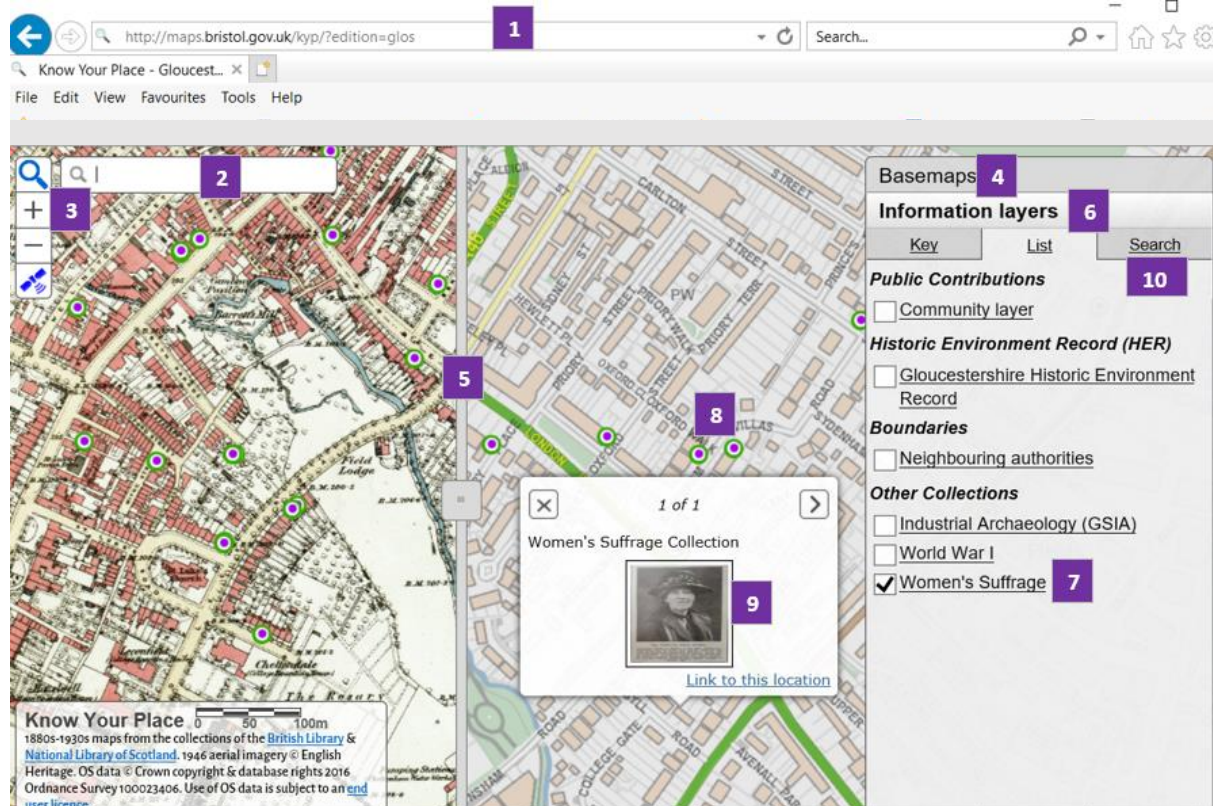
Women's Suffrage Supporters Online

Know Your Place website has a new information layer showing the homes of the supporters of Women's Suffrage, with short biographies and photos.


See how the support came from both upper and working classes, and from both men and women.

The Women's Suffrage layer has been created from a database of suffrage supporters in Gloucestershire researched and compiled by historian Sue Jones. Entries mainly relate to supporters living in Cheltenham but there are also entries for Cirencester and Stroud. One major source of information are local newspapers and national suffrage newspaper accounts of activities: these can help to identify the high-profile activists. But a unique source of information for the Cheltenham area is a 1912 book of signatures of women and men presented in gratitude to their M.P. James Agg-Gardner for introducing the second reading of a women's suffrage bill that year (Gloucestershire Archives reference D5130/6/6). This identifies many more who could not emerge from the newspaper accounts. Additional details have been derived from the 1901 and 1911 censuses. Images have been sourced mainly from contemporary newspapers, particularly the *Cheltenham Chronicle and Gloucestershire Graphic*. Thanks go to Sue Jones for sharing her research – Sue's website can be found [here](#). Volunteers from Cheltenham Local History Society helped to find additional images and uploaded the entries for this layer.

TO ACCESS THE DATA:



1. Go to <http://maps.bristol.gov.uk/kyp/?edition=glos>
2. Click on the magnifier box (top left) and enter a postcode or street name.
3. Zoom in/out using the +/- (top left). You can also click and hold the mouse to drag it across the screen to move the map.
4. Click on Basemaps (top right) to select date of the left (Comparison) and right (Main) maps.

5. You can move the slider bar to compare now and then.
6. Click Information Layers (lower right under the map thumbnails).
7. Untick all the boxes and select the Women's Suffrage layer only.
8. Click on a green and purple roundel  to view a photo and information.
9. Click on the thumbnail to view a larger image in a new tab. Close the tab with the image to return to the main [Know Your Place](#) website.
10. Click [Search](#) to search by surname, address or any another keyword or phrase such as 'census evader'.

Basemaps

Information layers

Key	List	Search
earengy	<input type="button" value="Search"/>	1 result(s).

Women's Suffrage

Submitter's name:
[No data available]

Description:
 Florence **EARENGEY**, born c1878, was a married member of the Women's Franchise League (WFL) who lived at Ashley Rise, Ashley Road, Cheltenham. She died 29 December 1963. On the 1901 census she had no occupation. On 1911 she was a census evader: her husband is listed at Ashley Rise, Ashley Road and there is a note 'The other members of this household were away as a protest against women having no Parliamentary Vote'. She was a signatory of the 1912 Agg Gardner book (held at Gloucestershire Archives catalogue ref D5130/6/6. Her husband was a solicitor. Image published in the Cheltenham Chronicle & Gloucestershire Graphic on 3 December 1910.
[Map](#)

11. Click on [Map](#) to zoom to the location and see thumbnail image.